

MAZURY

na

WORTNIPIAN

poświęcone

Wielmożnym Pannom Baronownom Zofii i Maryi

GOSTKOWSKIEM

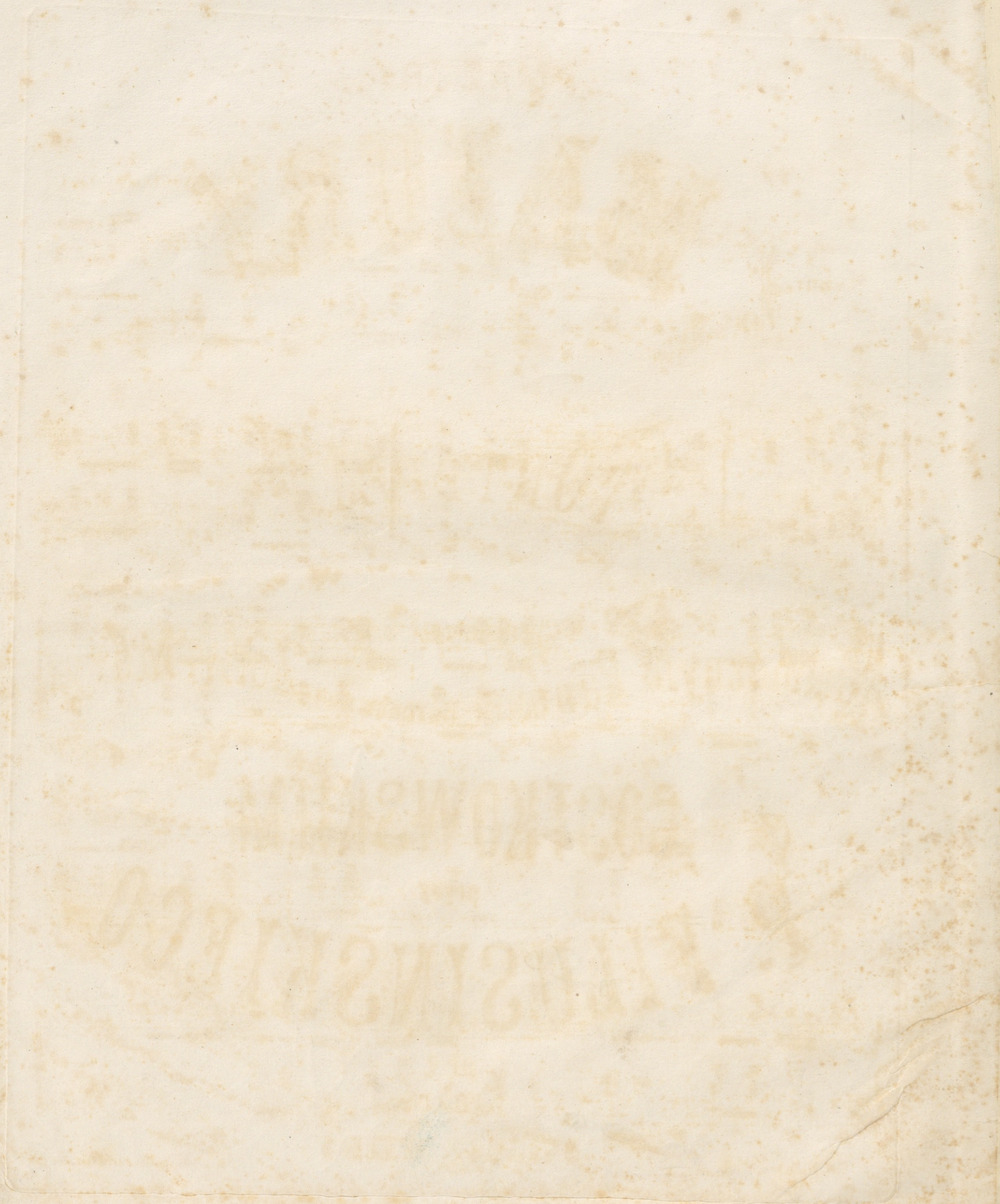
przez

P. FILUSIŃSKIEGO.

OP. 2.

Krakow

JULIUSZ WIEDEM.



MAZURY

Nº I.

P. FILUSINSKIEGO. Op. 2.

Mazur.

f *p* *f*

Fine *p*

f *Dal Segno al Fine*

Trio.

p dolce

Mazur Da Capo

Druck von V. Seemann in Wien.

J. 93.W.

BIBLIOTEKA
UNIERSYTECKA
w Toruniu

K. 2520/60

Nº II.

Mazur.

Dal Segno al Fine

Trio.

Nº III.

Mazur.

con fuoco

The first system of the Mazur section consists of two staves. The treble staff contains a series of chords and melodic fragments, while the bass staff provides a harmonic accompaniment with chords and a simple bass line. The tempo is marked 'con fuoco'.

The second system continues the Mazur section. It begins with a forte (*f*) dynamic and includes a 'Fine' marking. The system concludes with a piano (*p*) dynamic marking.

The third system of the Mazur section concludes with the instruction 'Dal Segno al Fine'.

Trio.

p

The first system of the Trio section begins with a piano (*p*) dynamic. It features a more melodic and rhythmic texture compared to the Mazur section.

The second system of the Trio section includes a crescendo (*cresc.*) marking and a forte (*f*) dynamic. It ends with a repeat sign.

Mazur Da Capo

Nº IV.

Mazur.

ff *p*

Fine *p*

f *Dal Segno al Fine*

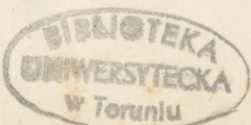
Trio.

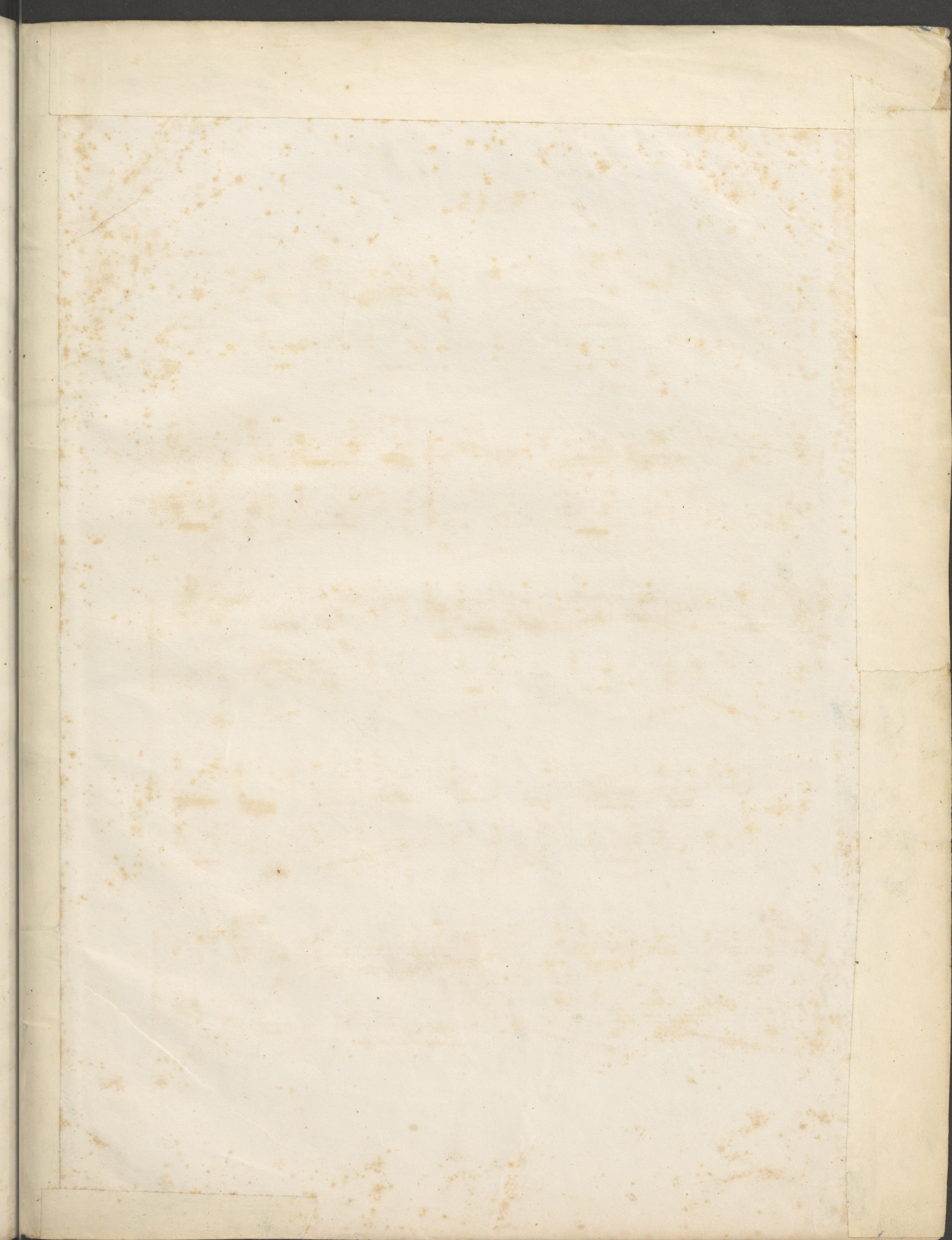
p

8.....

cresc *Mazur Da Capo*

J. 93. W.





2320

86/60

Biblioteka
U. M. K.
Toruń

IV 12396