



CENTURIAE
 SACRARVM CANTIONVM
 & Moteetarum (ut vocant.) 4. 5.
 6. 7. 8. 9. & plurium vocum in gratiam
 Ecclesiarum recens edi-
 tarum,

AUTHORE
 NICOLAO GOTSCHOVIO
 Rostochiensi, in-ibidem ad D. Virginem
 Musico Organico.

DECAS TERTIA.
 Sexta Vox.



ROSTOCHII
 Typis Myliandrinis; Impensa Autoris
 ANNO M. DC. X.



A musical staff in C-clef (soprano) with a key signature of one flat (B-flat). It contains a sequence of notes, including a whole note with a cross symbol (✱) and a half note with a 'r' (ritardando) marking.

A Ufer immensam Deus aufer iram & cruentatum cohibe

A musical staff in C-clef with a key signature of one flat. It contains notes and rests, with a cross symbol (✱) and a 'r' marking.

flagellum cohibe flagellum properes ad æquam ij

A musical staff in C-clef with a key signature of one flat. It contains notes and rests, with cross symbols (✱) and a 'r' marking.

pen de re lan - cem si lu -

A musical staff in C-clef with a key signature of one flat. It contains notes and rests, with cross symbols (✱) and a 'b' (basso) marking.

ant justam mala nostra culpam quis potest sævas to le ra re

A musical staff in C-clef with a key signature of one flat. It contains notes and rests, with a 'b' marking.

ij plagas to le rare plagas plagas to le ra re pla -

A musical staff in C-clef with a key signature of one flat. It contains notes and rests, with a cross symbol (✱).

gas to le ra re to le ra re plagas cum nec ultricem

A musical staff in C-clef with a key signature of one flat. It contains notes and rests.

spa - cio sa ferret cum nec ultricem ij ij

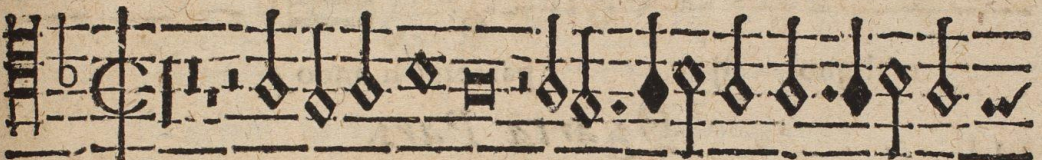


ij spa ci o sa fer ret ma chi-



na virgam ij

Secunda Pars.



P Arce sed nostris ij mi se ran do



culp is mi se ran do culp is ij



mi se ran do cul- pis par ce sed nostris mi se ran do cul- pis



ij jus pa ri clemens pi e ta-

te miscens ij

Cu i ma-

net semper pro-

prium maligno maligno parcere mundo

Cur super vermes: dormit.

maligno ij

parcere, mundo.

Quarta Pars.

N

Os parentales ma culant reatus ma culant reatus re-

a tus ma culant reatus nos parentales ma culant re-

a-

tus & caro men tem trahit imbecil-

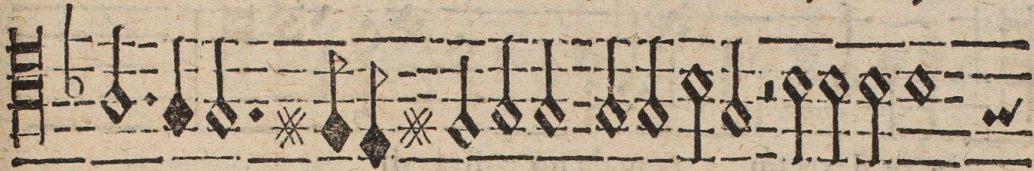
lem trahit imbecil-

lem trahit trahit ij

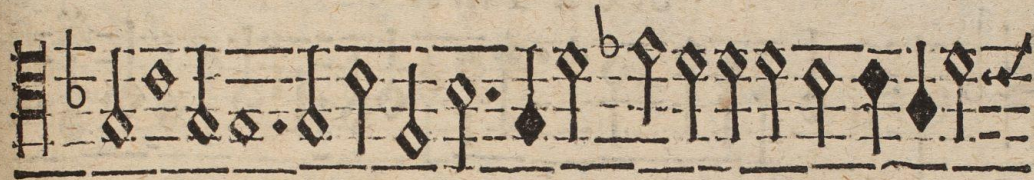
im be-



cillem imbecillem trahit ij tra hit ij ij



im becil- lem Ergò tam fortem ij



fragilem benigno respice vultu benigno re-



spice vultu respice vul- tu.

Quinta Pars.

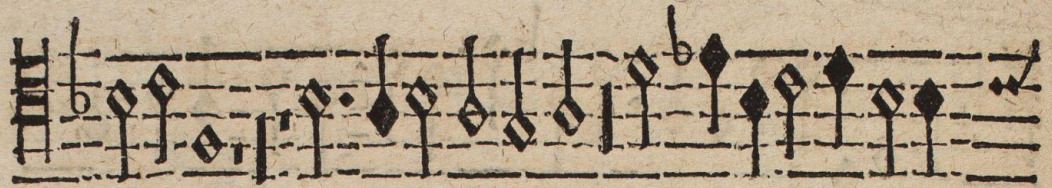


D A crucem clavos seu ticam coronam ij



co ro- nam lanceam funes ij |

E 3.



ri gidamq; mortem in ter i ratam medi-



a re dextram & mala no stra ij

Sexta Pars.



N On opus sum mi pe reat magistri nec sinas cassam



fore pansionem corde sed ma-

nans sed



manans corde sed ma-

nans corde sed ma-



nans ij

ij

sed



manans la-

vet la-

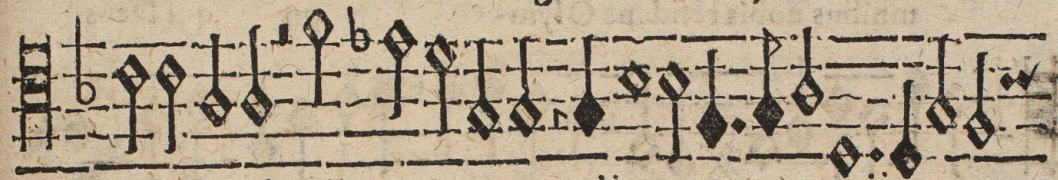
vet omne



la- vet omne crimen omne crimen



lavet omne cri- men sanguis & unda ij san-



guis & unda ij ij ij



sanguis & un- da sang. & unda.

Septima Pars.



H Ocratum quo fit ij ij fa ci-



as pre ea mur o- mnibus o-



mnibus o- mnibus no bis o-



mnibus nobis o- mnibus o-



mnibus nobis residens Olym- po qui Deus



semper dominaris orbi domi na ris ij dominaris



ij ij orbi qui Deus semper dominaris or-



bi domi naris domina- ris ij domi na -



ris ij or- bi Tri-



nus, & Unus, Tri nus & U- nus.